



## PS Gold Miner

from PipSet.com

### Table of Contents

<b>Introduction .....</b>	<b>2</b>
Recommendation .....	2
<b>Install the EA .....</b>	<b>2</b>
Open the Data Folder .....	2
Copy EA to Expert Folder .....	3
<b>Setup MT4 settings .....</b>	<b>3</b>
Refresh the Expert Advisor List .....	3
Open Options .....	3
Add licensing server .....	4
<b>Run the EA .....</b>	<b>5</b>
Open the chart .....	5
Open Chart .....	5
Start The EA .....	5

## Introduction

This EA works best on the major forex pairs recommended pairs are EURUSD and GBPUSD (on H1 or higher TF). EA can work on 1000 account balance however, the recommend minimum account balance is 2000.

The licensing system can't work on the MetaQuote's VPS do to the limitation on dlls, for VPS you can use any full featured windows VPS like from MT2VPS.com.

## Recommendation

**Pairs:** EURUSD, GBPUSD

**Time Frame:** H1 or higher

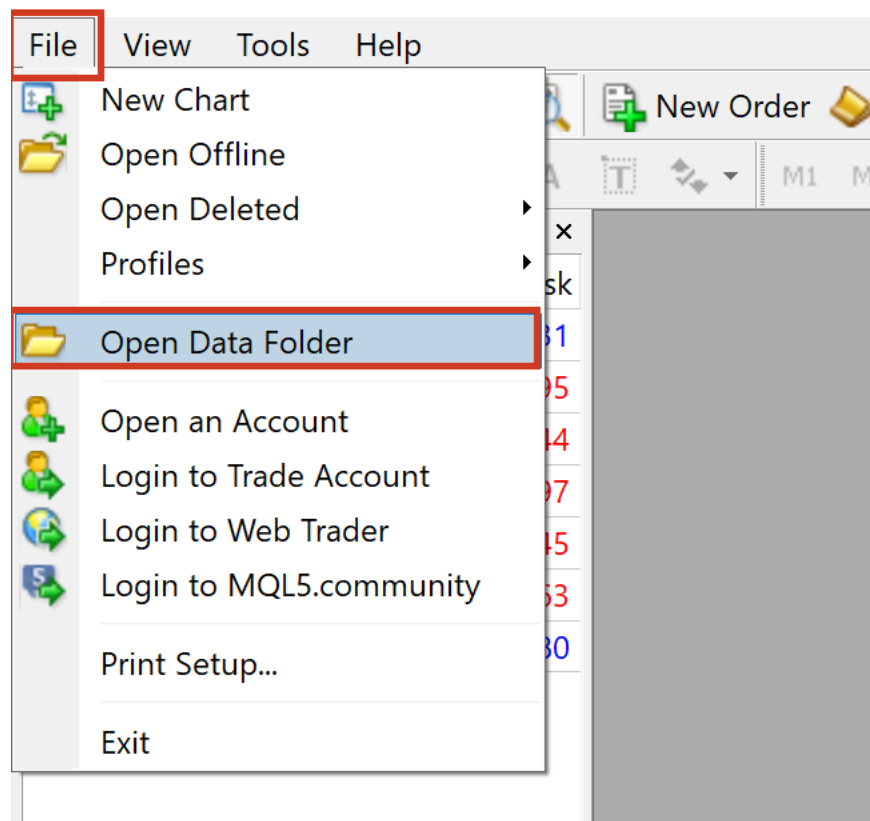
**Min Balance:** 2000

**Lot Size:** Automatic

## Install the EA

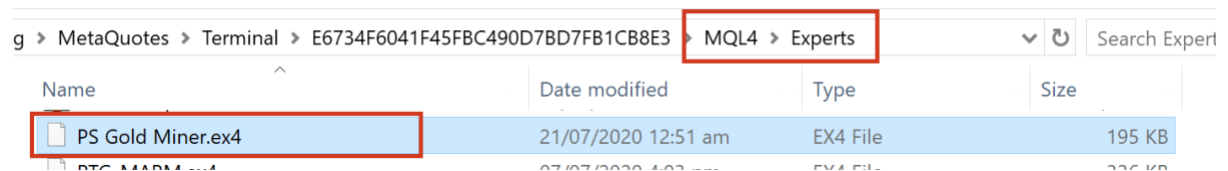
### Open the Data Folder

Click **File** > **Open Data Folder**.



### Copy EA to Expert Folder

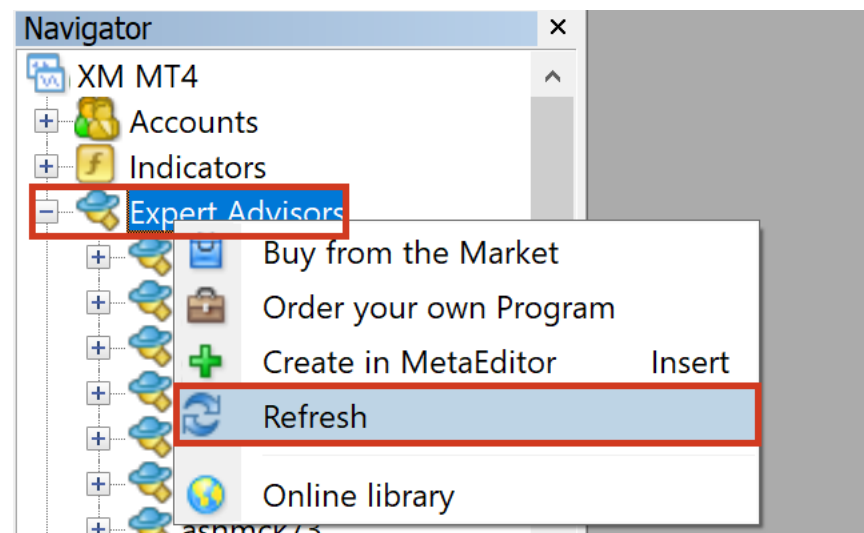
In the Data Folder Navigate to **MQL4 > Expert** and copy the EA (**PS Gold Miner.ex4**) file in there



### Setup MT4 settings

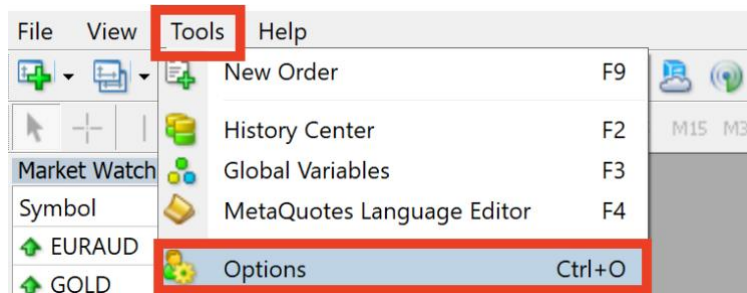
#### Refresh the Expert Advisor List

Right click on “**Expert Advisor**” and click **Refresh**.



### Open Options

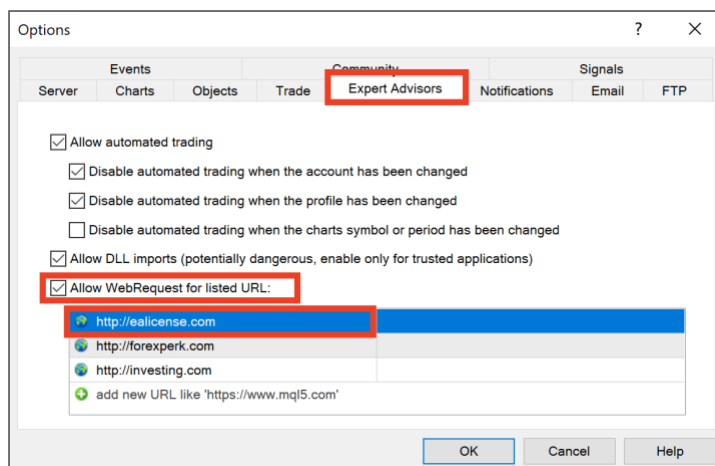
Click on **Tools > Options**



### Add licensing server

Goto **Expert Advisors** tab and check **Allow WebRequest for listed URL:** and add the following URL in the list

<http://ealicense.com>

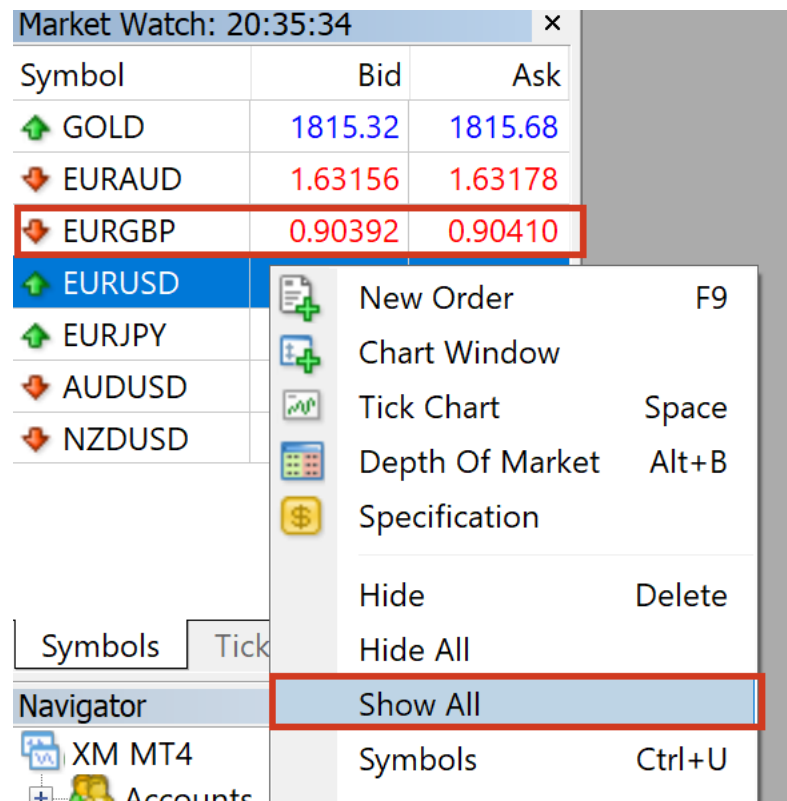


Now you are ready to start the EA.

## Run the EA

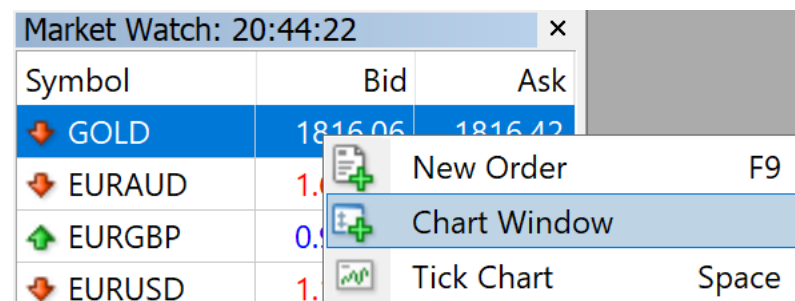
### Open the chart

Right click on **Market Watch** > **Show All**



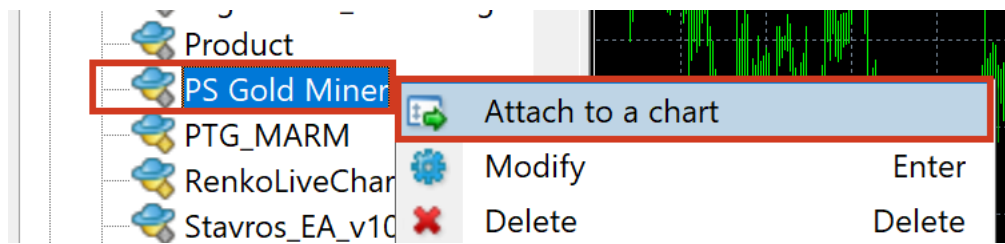
### Open Chart

- Find **EURUSD** right click on it and select **Chart Window**
- Find **GBPUSD** right click on it and select **Chart Window**



### Start The EA

In the navigator right click on the **PS Gold Miner** and select **Attach to a chart**.



All is done.  
Happy Trading.